



280

years of excellence



International Medicine and Biomedical Science Programs 2017-2018

INTO  ST GEORGE'S, UNIVERSITY OF LONDON

Contents

Destination St George's, University of London

- 3 About St George's, University of London
- 4 Study in London
- 5 A local community in the heart of the city
- 6 Student life
- 8 Accommodation

About your course

- 10 International Medicine
- 14 Clinical placements
- 16 Biomedical Science
- 18 International Graduate Medicine

Your application

- 20 How to apply
- 22 Dates and prices



www.intostudy.com/sgul



www.facebook.com/into.sgul



www.twitter.com/into_sgul



www.youtube.com/user/mysgul



www.instagram.com/intosgul



Top 200

universities worldwide
(Times Higher Education World
University Rankings 2015-2016)

1st

worldwide for
research influence
(Times Higher Education World
University Rankings 2015-2016)

About St George's, University of London

With a 280-year history, St George's, University of London offers the highest standards of excellence in teaching and student support in a friendly and welcoming environment. Our programs provide you with the opportunity to study for an internationally recognized qualification in one of the world's most exciting cities.

INTO ST GEORGE'S, UNIVERSITY OF LONDON

The six-year International Medicine (BSc/MBBS) program will provide you with an opportunity to study in London for your basic sciences, side-by-side with UK and European students, followed by clinical clerkships at high quality US partner institutions. Throughout the program, you will receive dedicated guidance and support for obtaining a post-graduate residency in the US or Canada.

Our co-location with St George's University Hospitals NHS Foundation Trust in the Tooting area of south-west London will provide you with high-quality UK clinical exposure from the very beginning of your studies. St George's Hospital, considered a Level-1 trauma center by US standards, is one of the UK's busiest general hospitals.

With our long history of teaching excellence, St George's is excited to welcome students from around the world to study in London, and we look forward to continuing our tradition of student success.



Experience clinical placements
in the UK and US

Internationally-focused
programs preparing
you for worldwide
medical careers

Study in London

London is one of the most exciting and diverse cities in the world. A hub of research, culture and innovation, London is a truly global city. By studying here, you benefit not only from the history and influence of the city, but also the connections and opportunities that it offers.

THE IDEAL STUDENT CITY

- Go shopping on the world-famous Oxford Street, 20 minutes away on the Underground.
- Visit the Science Museum in Kensington.
- Home to over 100,000 international students from more than 200 countries (StudyLondon 2014).
- Go for a run or relax in one of London's 3,000 parks and open spaces.
- Experience the best of world cuisine, from Chinatown and curry in Brick Lane, to market stalls and the latest pop-up restaurants.
- 100s of museums, galleries and music venues, many with free access.



A local community in the heart of the city

Tooting offers the best of both worlds. Small enough to maintain a friendly, local atmosphere, but close enough to the bright lights of central London, you will benefit from everything the capital has to offer, while living in a busy, local community.

CULTURALLY VIBRANT

Tooting is a multicultural area with an exciting and diverse background of people and histories. Its diversity is reflected in the shops, restaurants and wide range of local facilities you will find right on your doorstep, from big-name clothing stores and supermarkets, to specialist boutiques.

You'll find plenty of ways to occupy your spare time and socialize with friends, including:

- an excellent selection of restaurants and cafés, offering cuisines from around the world
- nearby Tooting Bec lido, the UK's largest outdoor swimming pool
- neighboring Wimbledon and Balham, which can be reached easily by bus
- Wandsworth Common and Tooting Bec Common, just 10 minutes from student halls

ACCESS AND AFFORDABILITY

A great advantage of our location is that you are able to live in affordable housing within walking distance of lectures - saving time and money getting around. With excellent transport links including an Underground station, a train station and multiple bus routes nearby, you can easily be in the heart of the city in just 20 minutes.



5th

best city in the world for students

(QS Best Student Cities 2016)



90+

clubs, societies and
community projects

Excellent
volunteering
opportunities

Student life

Being a student is about more than just obtaining a degree, and at St George's you'll have many opportunities to form life-long friendships as you get involved in student life

STUDENTS' UNION

The majority of social and leisure activities revolve around the Students' Union (SU), which:

- supports the student societies
- hosts regular events such as comedy nights, film nights and music events
- provides many opportunities to volunteer
- represents all St George's students on university committees

Union facilities include a games and pool room, music room, dance studio, bar, café, and additional common rooms.

For more information about the SU, visit: www.sgsu.org.uk



Discover more about student life:
www.intostudy.com/sgul/campus-life



JOIN A SOCIETY

Whatever your interests, there's a society to suit you at St George's, from drama, film and photography, to modern languages and faith societies. You'll also have the opportunity to join societies related to the health sciences, including:

- Amnesty International
- Global Health Forum
- Doctors Without Borders
- UNICEF

BECOME A VOLUNTEER

The SU provides many opportunities to volunteer. You can volunteer and learn first aid skills with the St John Ambulance service, provide support for sick children at the Teddy Bear Hospital, or fundraise for research through a number of medical charities.

SPORT

If you enjoy sport, this is the place to be. We have sports teams to suit your interest and abilities.

You will have access to a number of local and on-site facilities including squash courts, aerobic and weight training rooms, a swimming pool and a sports hall for badminton, volleyball, soccer and more.

INTERNATIONAL SUPPORT

You are able to join the International Student Society (ISS), which organizes social events designed to help you take advantage of the wide range of opportunities available in London.

You will also enjoy free membership of International Students' House - a vibrant student center in central London where you can meet British and international students studying at universities across London.

Accommodation

Choose to live alongside other students in the University's student residences, which are within easy reach of the university campus.

HORTON HALLS

Horton Halls accommodates almost 500 students from all St George's programs, and offers the chance to mix with British and international students in a diverse and dynamic student environment.

- 15 minutes' walk, or a short bus journey, from the University campus.
- Close to local supermarkets and shops.
- En suite, single study bedrooms, sharing a well-equipped kitchen and dining area.
- Specially designed ground-floor accommodation for wheelchair users.
- Two spacious common rooms, each containing comfortable chairs, table tennis and televisions.
- Internet access in all rooms.
- On-site laundry facilities.
- 24-hour staffed reception.
- A bedding pack including a single duvet and cover, pillow and pillow case, and a sheet and mattress protector is included.

For more information on the halls of residence, visit: www.sgul.ac.uk/study/accommodation

OTHER ACCOMMODATION OPTIONS

The University of London

All students at INTO St George's have access to accommodation services run by the University of London, which has eight intercollegiate halls of residence, located in central London. Here, you will have the opportunity to mix with students from the University of London colleges.

For more information, visit: www.halls.london.ac.uk

Private accommodation

The University of London Housing Services also offer advice to students seeking accommodation in the private sector. If you are considering private accommodation in London, contact the St George's accommodation office via email:

accommodation@sgul.ac.uk



"I really like that we have placements early on in the course, it's not just focused on Clinical Sciences. We've already had placements in geriatrics, surgery and radiology, which has been really interesting. Our anatomy and clinical skill tutor groups also give us more opportunity to practice hands-on skills."

Patra, Thailand



2014

Applied for
International
Medicine



2014

Arrived at
INTO St George's,
University of
London



2016

Now studying Year 2
(Clinical Sciences)

International Medicine (BSc/MBBS)

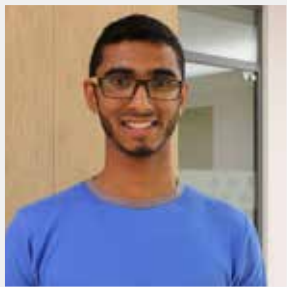
- Program focuses on **interprofessional training** and **clinical placements**
- Taught by practicing clinicians, with **direct patient contact** from Week 2

PROGRAM OVERVIEW

This six-year program is ideal for those graduating from high school with a commitment to pursuing a career in medicine. Your first four years, based at St George's, University of London, comprise clinical science in Years 1 and 2 utilizing a Case-Based Learning curriculum, supplemented by lectures and small group learning. In the third year you transition into clinical practice with a Problem-Based Learning curriculum, representing a shift in emphasis from structured to more self-directed learning.

In Year 4, you complete a year of biomedical science and focus on a medical research project. At the end of this year you graduate with a BSc (Hons). During this year you will also be preparing for the final two years (Years 5 and 6), which are spent in clinical practice in the US.

This program includes support towards the United States Medical Licensing Examination (USMLE). You will sit Step 1 and 2 of the USMLE as part of this program.



"On the way to the cafeteria, you see the pediatric ICU and you think, 'I could be doing placements there sometime soon'. It's special, it makes it unique."

Kashyap, Kenya



2016 Now studying Year 2 of **International Medicine (BSc/MBBS)** at **St George's, University of London**

Key facts

Program dates (Year 1)

Mon 25 Sep 2017-Wed 13 Dec 2017

Wed 03 Jan 2018-Tue 27 Mar 2018

Wed 25 Apr 2018-Fri 06 Jul 2018

Program length

6 years (full time)

Location of study

Years 1-4:

St George's, University of London campus in south-west London, and attached hospitals and General (Family) Practice.

Years 5-6:

Clinical rotations at our partner sites in the US.

Class hours

Notional 40 hour learning week with approximately 20 hours' contact teaching per week.

Age requirement

Minimum age 16

NOTE: Students must be at least 18 years of age in order to undertake certain clinical placements, for example, pediatrics.

Academic entry requirements

Canadian applicants

High School (Provincial) Diploma

90% overall with 90% or higher in Biology, Chemistry, Math, and English. Students from Quebec should contact us for specific admissions requirements.

or

High School (Provincial) Diploma + AP

75% overall with 75% or higher in Biology, Chemistry, Math and English plus 3 AP exams at 5,5,5 to include Biology, Chemistry, and one other subject from Sciences, Math, English Language or Literature, Foreign Language or Literature, or History. (Students with only 1-2 AP exams should contact us for requirements.)

or

High School (Provincial) Diploma + IB

75% overall with 75% or higher in Biology, Chemistry, Math and English, plus 3 Higher Level IB exams at 6,6,6 to include Biology and Chemistry. (Students with only 1-2 IB exams should contact us for requirements.)

Canadian and US applicants

Full IB Diploma

36 points overall (not including Theory of Knowledge and Extended Essay). Including: combined score of 18 at Higher Level, to include Biology and/or Chemistry at grade 6. Plus, grade 6 or above in Standard Level Biology or Chemistry, if not taken to Higher Level. A grade 5 or above in Standard Level Math and English, if not studied to Higher Level. Canadian applicants offering the Provincial Diploma + Full IB Diploma will be assessed on the better of their two qualifications.

US applicants

High School Diploma + AP

3.4 GPA with 3 AP exams at 5, 5, 5 to include Biology, Chemistry, and one other subject from Sciences, Math, English Language or Literature, Foreign Languages or Literature, or History, plus a fourth AP exam at a minimum of 4 in any subject area.

or

High School Diploma + IB

3.4 GPA and at least three Higher Level IB courses at grades 6,6,6, plus one standard level course at grade 6, to include Biology and Chemistry, at least one to Higher Level.

Entry requirements are subject to review and amendment. Please check our website for details of any changes to entry requirements: www.sgul.ac.uk

English language entry requirements

Students who graduate from an English medium school and whose native language is English are exempt from this requirement.

For students who are not exempt from this requirement: IELTS 7.0 (with a minimum of 7.0 in writing and no less than 6.5 in any other subskill) or equivalent.

The University accepts a wide range of alternative English language tests. For further details, visit:

www.intostudy.com/sgul/courses

Additional entry requirements

Applicants will be assessed on the quality of their written application, their work or voluntary experience, their performance in the UK Clinical Aptitude Test (UKCAT), and their performance in the medical selection Multi Mini Interview (MMI).

Please contact us for details of UKCAT requirements for 2017 entry.

NOTE: this program is exclusively for international students, and applications from UK and EU citizens/residents who would normally be considered as 'home' students under UK legislation will not be considered.

Acceptance on the program is also subject to satisfactory police and health clearance.

Tuition fee

GBP£31,690 per year

The cost of sitting USMLE is not included in the tuition fee. Students on programs of study lasting more than one year should be aware that tuition fees are subject to an annual revision and typically increase by up to 5% per annum. We benchmark tuition fees against sector comparators and give students as much notice as possible of annual fee increases. Fees for placement years may be at a higher level subject to costs from providers.

Awarding body

St George's, University of London

Further guidance

For further guidance, please contact: namerica@sgul.ac.uk

SAMPLE WEEK - BSC/MBBS (YEARS 1 AND 2)

Each week, lectures and clinical sessions complement a case, so that teaching and learning takes place in context and enhances learning in clinical medicine and basic science.

SAMPLE TIMETABLE

Time/Day	Monday	Tuesday	Wednesday	Thursday	Friday
9.00-10.30	Case-Based Learning Tutorial	Lecture - The aging heart and lungs	Lecture - Elder abuse	Anatomy (dissection) - Neuroanatomy revision	Lecture - Pharmacology and older people
10.30-12.00	Expert Forum (Q&A session on previous week's CBL case)	Lecture - The aging GI tract and skin	Lecture - Language in people with disabilities	Tutorial - Communicating with people with disabilities	Lecture - Infection and immunity
Lunch					
13.00-15.00				Clinical skills - Fall assessment	Lecture - The aging brain
15.00-17.00	Student Selected Component (SSC)	GP visit	Afternoon free for sport/societies and/or private study	Communication skills - interviewing patients	Lecture - Dementia

AFTER GRADUATION

The International Medicine program is designed for students with the intention of pursuing post-graduate residency training and medical practice in the US, Canada, and in their home country, rather than in the UK.

While the St George's International Medicine (BSc/MBBS) is recognized by many different countries, applicants should check with their own individual national or state authority if they aspire to practice in their home country.



“By the end of my first year, I had already done a number of clinical attachments. It’s tremendous; you can’t believe the amount of hands-on experience you get.”

Jai, Canada



2014

Applied for
International
Medicine

2014

Arrived at
INTO St George’s,
University
of London



2016

Now studying Year 2
(Clinical Sciences)

Clinical placements in the US and the pathway to residency

You will be exposed to clinical rotations both in the UK and in the US. By completing rotations in both countries, you will gain a strong understanding of international healthcare systems and differing models of medical care and treatment.

CLINICAL PLACEMENTS

The UK rotations will take place during Years 1-3 of the program. In the UK, rotations will be held in St George's Hospital, and/or other hospitals in London and the surrounding areas.

CLINICAL TRANSITION YEAR (YEAR 3)

General Medicine - 5 weeks

General Surgery - 5 weeks

General Practice - 5 weeks

Year 4 is a research year after which students are awarded a BSc in Basic Medical Sciences. The US rotations will then take place during Year 5 and Year 6 at the Joan C. Edwards School of Medicine at Marshall University, Huntington, West Virginia or our extended range of future clinical sites under development.

PENULTIMATE YEAR (YEAR 5)

FINAL YEAR (YEAR 6)

Medicine

Advanced Clinical Practice - 1-week course

Geriatrics

Critical Care and Anesthesia - 4-week core placement

Cardiology

Emergency Medicine - 4-week core placement

Surgery and allied specialities

Sub-Internship Medicine - 4-5-week placement

Neurology and Psychiatry

Sub-Internship Surgery - 4-5-week placement

Obstetrics/Gynecology

Sub-Internship Family Practice - 4-5-week placement

Pediatrics

Public Health - 2-week placement

Special study module - 5-week placement

Elective - 5-week placement. Students have the opportunity to complete electives in the US, UK and around the world.

The clinical placement years also incorporate revision, examination and teaching sessions.

ELECTIVES

In addition to clerkships in the UK and US, you will also have the opportunity to complete electives. Electives are available in the UK, US or around the world.

USMLE EXAMS AND RESIDENCY ADVISING

INTO St George's has incorporated test preparation for the United States Medical Licensing Exams (USMLE) Steps 1 and 2 exams and residency advising into the program, so you will have the support needed to be successful. The USMLE exams are a series of exams that are taken by students who are looking to pursue residency and become licensed to practice medicine in the US. While support towards the USMLE is provided, a commitment to self-directed learning is essential in preparing for USMLE.

For students looking to return to Canada, preparing for and taking the USMLE will also be of value, as the US and Canadian medical licensing exams are similar.

CLINICAL PLACEMENTS IN THE US

Our clinical placement site at Marshall University's Joan C. Edwards School of Medicine, West Virginia, is centered around a medical school with strong ties to local, affiliated healthcare facilities. The school is LCME accredited and offers residency programs approved by the Accreditation Council for Graduate Medical Education.

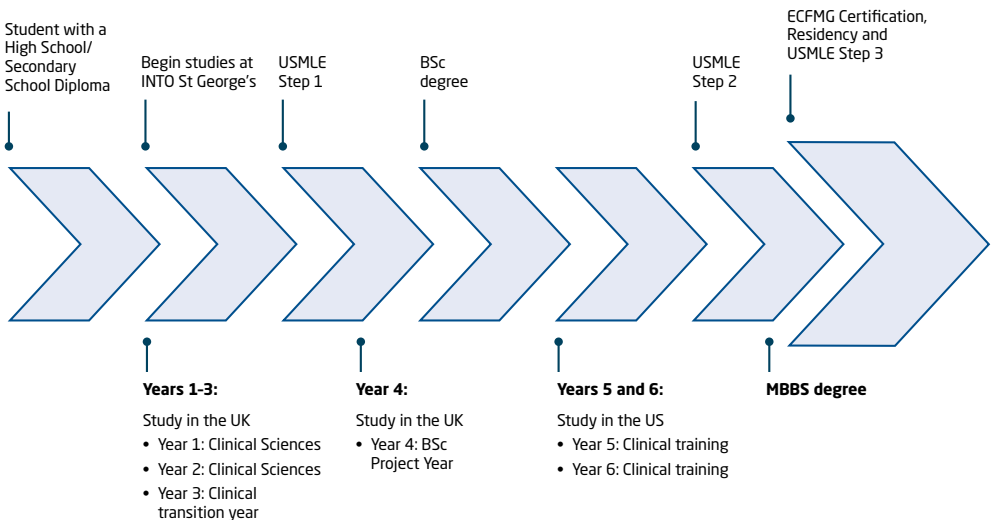
For more information visit: www.acgme.org

The School is adjacent to Cabell Huntington Hospital, a regional referral center and teaching hospital with over 300 beds and a number of specialized care centers.

Further clinical sites are under development.



INTERNATIONAL MEDICINE (BSc/MBBS 6)



Biomedical Science BSc (Hons)

- **Accredited** by the **Institute of Biomedical Science**
- Opportunity to **progress into the Clinical Transition year** of the International Graduate Medicine (MBBS) program

PROGRAM OVERVIEW

During this three-year program, you will benefit from specific biomedical science modules. These offer a broad coverage of topics in the biomedical field, ranging from fundamental aspects of cell and molecular biology, through systems-based anatomy, physiology and pharmacology, to advanced basic science and clinical laboratory techniques. The overall aim is to equip you for the specialized units in the final year.

HOW IS THE PROGRAM VALIDATED?

The program is professionally accredited and quality assured by St George's, University of London. Successful completion of the program leads to the award of a St George's Hospital Medical School Bachelor of Science degree (with Honors) with the opportunity to progress into a wide-range of scientific careers as well as the opportunity to progress into medical training.

PROGRESSION OPTIONS

It is possible for top performing students on this program to progress directly into the Clinical Transition Year of the International Graduate Medicine Program (MBBS4) (Year 2), subject to:

- achieving a minimum of 65% in Year 1; a minimum of 67% in Year 2
- being predicted to achieve a minimum grade of Upper Second Class on graduation
- satisfactory performance in the medical selection Multi Mini Interview (MMI).

Alternatively, you can progress onto Year 1 of the International Graduate Medicine (MBBS) program subject to:

- achieving a minimum of an Upper Second Class on graduation
- satisfactory performance in the GAMSAT or MCAT examination
- satisfactory performance in the medical selection Multi Mini Interview (MMI).

Key facts

Program dates

For program dates, please visit: www.sgul.ac.uk

Program length

3 years (full time)

Class hours

Notional 40 hour learning week with approximately 20 hours of contact teaching per week.

Age requirement

Minimum age 16

Academic entry requirements

US applicants

High School Diploma + Advanced Placements (AP)

High School Diploma with an average of 75% (GPA 2.75), and a minimum of 80% (GPA 3.0) in Math, Biology and Chemistry. Math, English Language, Biology and Chemistry must all be taken to Grade 12, plus three AP exams at 5,4,4 to include Chemistry and Biology and one other subject from: Math, Physics, English Language or Literature, Foreign Languages or Literature, or History.

High School Diploma + IB

2.75 GPA with a minimum GPA 3.0/80% in Math, English, and Sciences, plus 3 IB Higher Level exams at 6,5,5 to include Biology and Chemistry.

Full IB Diploma

Overall score of 34 which must include a minimum score of 16 points at Higher Level. At Standard Level, a minimum score of 5 must be attained in Mathematics (or Maths Studies) and English.

Canadian applicants

High School (Provincial) Diploma

80% overall with 80% or higher in Biology, Chemistry, Math and English. Students in Quebec should contact us for admissions requirements.

High School (Provincial) Diploma + AP

65% overall with 65% or higher in Biology, Chemistry, Math and English, plus 3 AP exams at 5,4,4 to include Biology, Chemistry, and one other subject from: Math, Physics, English Language or Literature, Foreign Languages or Literature, or History. Applicants with only 1-2 AP exams should contact us for requirements.

High School (Provincial) Diploma + IB

65% overall with 65% or higher in Biology, Chemistry, Math and English, plus 3 Higher Level IB exams at 6,5,5 to include Biology and Chemistry. Applicants with only 1-2 IB exams should contact us for requirements.

Full IB Diploma

Overall score of 34 which must include a minimum score of 16 points at Higher Level. At Standard Level, a minimum score of 5 must be attained in Mathematics (or Maths Studies) and English. Applicants offering the Provincial Diploma + Full IB Diploma will be assessed on the better of their two qualifications.

Applicants from outside Canada and the US

Please contact your INTO St George's representative.

Entry requirements are subject to review and amendment. Please check our website for details of any changes to entry requirements: www.sgul.ac.uk

Additional entry requirements

Applicants will be assessed on the quality of their written application, including personal statement.

Admissions requirements are subject to review; please contact your local INTO SGUL representative for details.

English language entry requirements

English language entry requirement for applicants for whom English is not a first language: IELTS 7.0 (with a minimum of 7.0 in writing, and no less than 6.5 in any other subskill) or equivalent.

Please contact your INTO St George's representative with any questions about alternative qualifications.

Tuition fee

For tuition fees, please visit: www.sgul.ac.uk

Awarding body

St George's, University of London

Further guidance

For further guidance, please contact: namerica@sgul.ac.uk

International Graduate Medicine (MBBS)

- Start **clinical rotations** from Year 1
- Experience **two education and healthcare systems** in the UK and the US
- Taught by practicing clinicians, with **direct patient contact** from week 2

PROGRAM OVERVIEW

The aim of this four-year program is to meet the high demand for qualified doctors while enabling graduates of any discipline to pursue a medical career.

- Gain a UK medical education while staying on track for residency in the US or Canada.
- By using a Problem-Based Learning (PBL) curriculum, the program incorporates virtual patients and virtual clinics into the learning process to supplement hands-on clinical practice.
- Strong emphasis on professional and clinical practice.

The first two years of the program take place in London at St George's, where you study basic and clinical sciences. Additionally, you will also complete some clinical rotations within St George's Hospital and/or other hospitals in the surrounding area. These experiences will provide students with insight into the National Health Service (NHS), one of the best healthcare delivery systems in the world.

The final two years (Years 3 and 4) are spent in clinical rotations in the US at INTO St George's, University of London affiliated clinical training sites.

Key facts

Program dates (Year 1)

Tue 29 Aug 2017-Fri 15 Dec 2017
 Mon 08 Jan 2018-Fri 23 Mar 2018
 Tue 03 Apr 2018-Fri 06 Jul 2018

Program length

4 years (full time)

Location of study

Years 1 and 2: St George's, University of London, and other attached hospitals and General (Family) Practices.

Years 3 and 4: Clinical rotations at one of our two US partner sites (Joan C. Edwards School of Medicine at Marshall University, Huntington, WV **or** Sidney Kimmel Medical College at Thomas Jefferson University, Philadelphia, PA), **or** further clinical sites currently under development.

Class hours

Notional 40 hour learning week with approximately 20 hours of contact teaching per week.

Academic entry requirements

Undergraduate degree with a minimum 3.3 cumulative GPA **or** a postgraduate or doctorate degree.

Please contact us if your degree classification was via a letter or percentage scale.

Entry requirements are subject to review and amendment. Please check our website for details of any changes to entry requirements: www.sgul.ac.uk

English language entry requirements

English language entry requirement for applicants for whom English is not a first language: IELTS 7.0 (with a minimum of 7.0 in writing and no less than 6.5 in any other subskill) or equivalent.

Additional entry requirements

Applicants will be assessed on the quality of their application, their work or voluntary experience, their performance in the MCAT or GAMSAT examination, and their performance in the medical selection Multi Mini Interview (MMI).

Minimum MCAT score: 503 overall.

Minimum GAMSAT score: 55 overall with a minimum of 50 in each section.

NOTE: this program is exclusively for international students, and applications from UK and EU citizens/residents who would normally be considered as 'home' students under UK legislation will not be considered.

Acceptance on the program is also subject to satisfactory police and health clearance.

Tuition fee

GBP£36,340 per year

The cost of sitting USMLE is not included in the tuition fee. Students on programs of study lasting more than one year should be aware that tuition fees are subject to an annual revision and typically increase by up to 5% per annum. We benchmark tuition fees against sector comparators and give students as much notice as possible of annual fee increases. Fees for placement years may be at a higher level subject to costs from providers.

Awarding body

St George's, University of London

Further guidance

For further guidance, please contact: namerica@sgul.ac.uk

How to apply

Applications for the International Medicine and Biomedical Science programs can be completed via the Universities and Colleges Application Service (UCAS). Direct applications may also be accepted if you have not applied or do not intend to apply to other UK schools. Please contact us for more details.

APPLICATION PROCESS

Students who meet specific academic requirements including achieving minimum score on the UKCAT exam (International Medicine BSc/MBBS only), and who submit a completed application, will be invited to interview.

If you have any questions about this process, contact: namerica@sgul.ac.uk

STEP 1: COMPLETING YOUR APPLICATION

Applicants should apply via the UCAS website www.ucas.com. Please use the codes below to ensure your application is received and is submitted for the correct program of study.

Institution code name: SGEO

Institution code: S49

International Medicine (BSc/MBBS):

course code: A900

International Graduate Medicine (MBBS):

course code: A901

Biomedical Science BSc (Hons):

course code: B940

If you have not applied for UK university entry through UCAS, you may also apply directly to us. For direct application guidance, contact:

namerica@sgul.ac.uk

We recommend applicants review our detailed application instructions online before submitting an application:

www.intostudy.com/sgul/medicine/apply

Application requirements

There is a fee for applying via UCAS; this is usually around £23. When completing your UCAS application you will be asked to include the following:

- personal statement
- voluntary experience/work experience history
- academic history

On completion of your UCAS application you must send the following documents to admissions@sgul.ac.uk quoting your UCAS ID*:

- scanned copy/copies of your official academic transcripts
- scanned copy/copies of entrance exam score report i.e. UKCAT/GAMSAT/MCAT (medicine programme applicants only)

Application deadlines for September 2017 admission:

15 October 2016 (6-year International Medicine (BSc/MBBS) program)

31 March 2017 (International Graduate Medicine)

31 May 2017 (BSc Biomedical Science program)

* Processing normally takes 2-3 weeks.

STEP 2: INTERVIEWS

At INTO St George's, Multi Mini Interviews (MMI) are used to evaluate applicants for our International Medicine (BSc/MBBS) program.

Once your completed application has been submitted and your transcripts received, St George's will review it and will select candidates to be invited to interview for admission into the program, on the basis of the quality of their application, academic history and test scores. Interviews will be held periodically at our London campus, and can be arranged remotely if you are unable to come to the UK. You will need to bring an official copy of your transcripts and test score(s) to the interview, as well as any documentation requested by Admissions in your interview invitation.

For more information about MMIs at St George's, please visit:

www.intostudy.com/sgul/medicine/interviews

STEP 3: OFFERS OF ADMISSION

Successful interviewees will receive an admission decision in writing within three to four weeks of the interview session.

Acceptance to the program

Once admitted you will need to work with admissions officers at St George's, University of London to identify any remaining issues related to accommodation, finances, travel, books, and any other items required for your program.

VISAS (UK AND US)

All non-EEA students wishing to study in the UK will need to apply for a Tier 4 visa from UK Visas and Immigration. In order to be eligible for a Tier 4 visa, you will need to have first received a Certificate of Acceptance for Study (CAS) from St George's, University of London. Admissions staff will issue a CAS to offer holders only once all the conditions of an offer of a place are met, and an initial fee deposit has been paid. Please note that this is not an additional charge, but will be deducted from the balance of fees to be paid on enrollment.

Once you have received a CAS, you will be able to apply for your Tier 4 visa online through the UK Visas and Immigration website at: www.gov.uk/tier-4-general-visa

St George's, University of London will sponsor all students who are offered a place and meet the conditions of their offer and all UK Visas and Immigration regulations, for the entire duration of their program of study.

Once students arrive, the Student Services team, in conjunction with the University's International Student Advisor, will provide information, support and guidance on all visa-related issues. Visa workshops will be held throughout the year and individual appointments will be made available for you should you require specific advice.

Visas for US clinical rotations

Students may also need to apply for visas for the duration of their US clinical placements. Please contact your INTO St George's education counsellor for further information about how you will complete your clinical rotations. Visas are issued at the discretion of the issuing authority of that country.

Dates and prices

INTERNATIONAL MEDICINE (BSC/MBBS)

Dates	Tuition price
Term dates (Year 1) Mon 25 Sep 2017–Wed 13 Dec 2017 Wed 03 Jan 2018–Tue 27 Mar 2018 Wed 25 Apr 2018–Fri 06 Jul 2018	GBP£31,690 per year* The cost of sitting USMLE is not included in the tuition fee. For the latest information visit: www.ecfm.org/fees
Years 5 and 6 are spent on clinical rotations at our partner sites in the US.	

INTERNATIONAL GRADUATE MEDICINE (MBBS)

Dates	Tuition fee
Term dates (Year 1) Tue 29 Aug 2017–Fri 15 Dec 2017 Mon 08 Jan 2018–Fri 23 Mar 2018 Tue 03 Apr 2018–Fri 06 Jul 2018	GBP£36,340 per year* The cost of sitting USMLE is not included in the tuition fee. For the latest information visit: www.ecfm.org/fees
Years 3 and 4 are spent on clinical rotations at our partner sites in the US.	

BIOMEDICAL SCIENCE BSC (HONS)

For programme dates and tuition fees, please visit: www.sgul.ac.uk

ACCOMMODATION PRICES**

Course	Horton Halls	Homestay (average price)
International Medicine	GBP£7,380	GBP£9,020
International Graduate Medicine	GBP£8,070	GBP£9,900

PUBLIC HOLIDAYS

2017	2018
New Year holiday Mon 02 Jan 2017	New Year holiday Mon 01 Jan 2018
Good Friday Fri 14 Apr 2017	Good Friday Fri 30 Mar 2018
Easter bank holiday Mon 17 Apr 2017	Easter bank holiday Mon 02 April 2018
May Day holiday Mon 01 May 2017	May Day holiday Mon 07 May 2018
Spring bank holiday Mon 29 May 2017	Spring bank holiday Mon 28 May 2018
Summer bank holiday Mon 28 Aug 2017	Summer bank holiday Mon 27 Aug 2018
Christmas Day Mon 25 Dec 2017	Christmas Day Tue 25 Dec 2018
Boxing Day Tue 26 Dec 2017	Boxing Day Wed 26 Dec 2018

* Students on programmes of study lasting more than one year should be aware that tuition fees are subject to an annual revision and typically increase by up to 5% per annum. We benchmark tuition fees against sector comparators and give students as much notice as possible of annual fee increases. Fees for placement years may be at a higher level subject to costs from providers.

** Students on programmes of study lasting more than one year should be aware that accommodation fees are subject to an annual revision and typically increase by up to 5% per annum. We will give students as much notice as possible of any increases.

FINANCIAL AID

INTO St George's is approved for US Federal Student Aid. For more information, visit: <http://bit.ly/1eklJON>

Canadian students can find more information at: <http://bit.ly/1PApKPQ>

SCHOLARSHIPS

INTO St George's offers a range of scholarships to support high-achieving international students with their tuition fees. For information please contact your local INTO St George's representative.

ESTIMATED COST OF LIVING

We recommend that you budget GBP£1,200-GBP£1,450 per month of study to cover your accommodation, entertainment, travel, sustenance and bills. Tuition fees and the cost of traveling home are not included in this estimate. This amount is only a guide and will vary depending on accommodation and lifestyle.

LIVING EXPENSES (INCLUDING FOOD, ACCOMMODATION, LAUNDRY, ETC)

While in the UK:	GBP£1,200-GBP£1,450 per month
While in the US:	GBP£800-GBP£1,050 per month (Huntington, WV)

ESTIMATED ADDITIONAL FEES

Travel to the UK:	GBP£600-GBP£900 per trip
Insurance:	GBP£357 for 12 months
Textbooks (optional):	GBP£600
USMLE Exam Fees	www.ecfm.org/fees



"Within our first two weeks we had already met a patient and performed an examination on them with the help of a supervising doctor. Learning in a hospital environment will help us excel as doctors because we've been exposed to the challenges many medical students don't get until later in their learning."

James, Australia



2016 Now studying Year 2 of **International Graduate Medicine** at **St George's, University of London**

Inquiries and applications

INTO St George's, University of London Admissions

Cranmer Terrace
London
SW17 0RE
United Kingdom

T: +1 888 299 9889 (for calls from within the US and Canada)

T: +44 1273 718640 (for calls from outside the US and Canada)

E: namerica@sgul.ac.uk (for inquiries from within the US and Canada)

E: ukes@intoglobal.com (for inquiries from outside the US and Canada)

© INTO St George's Hospital Medical School LLP, September 2016. Every effort is made to ensure that content published in this document is correct at the time of publication. However, due to circumstances beyond our control there may be instances where information contained in this document may have changed since the date of publication. The most up to date source of information is INTO St George's website which can be accessed at www.intostudy.com/sgul. In the event that there are material changes to the information contained in this document or to the information on INTO St George's website, these changes will be highlighted in future correspondence. The information provided in this document is subject to INTO's terms and conditions which can be accessed at www.intostudy.com/sgul/terms.

IUP 2 LLP is a limited liability partnership registered in England and Wales, registered number OC376452. Registered office: One Gloucester Place, Brighton, East Sussex, BN1 4AA, UK.

Education provider sponsor number DQOJ2TKEO



Through innovative partnerships with leading universities, we expand opportunities for higher education, ensuring success and transforming the lives of our students and staff.